

See discussions, stats, and author profiles for this publication at: <https://www.researchgate.net/publication/9672181>

Human Auditory System Response to Modulated Electromagnetic Energy

Article in *Journal of applied physiology* · August 1962

DOI: 10.1152/jappl.1962.17.4.689 · Source: PubMed

CITATIONS

99

READS

168

1 author:



Allan Frey

Randomline, Inc

70 PUBLICATIONS **1,001** CITATIONS

SEE PROFILE

Human auditory system response to Modulated electromagnetic energy.

ALLAN H Frey

General Electric Advanced Electronics Center

Cornell University, Ithaca, New York

Frey, Allan H. *Human auditory systems response to modulated electromagnetic energy.*

J. Appl. Physiol. 17(4):689-692. 1962-

The intent of this paper is to bring a new phenomenon to the attention of physiologists. Using extremely low average power densities of electromagnetic energy, the perception of sounds was induced in normal and deaf humans. The effect was induced several hundred feet from the antenna the instant the transmitter was turned on, and is a function of carrier frequency and modulation. Attempts were made to match the sounds induced by electromagnetic energy and acoustic energy. The closest match occurred when the acoustic amplifier was driven by the rf transmitter's modulator. Peak power density is a critical factor and, with acoustic noise of approximately 80 db, a peak power density of approximately 275 mw/cm² is needed to induce the perception at carrier frequencies of 425 mc and 1,310 mc. The average power density can be at least as low as 400 uw/cm². The evidence for the various possible sites of electromagnetic energy sensor are discussed and locations peripheral to the cochlea are ruled out.

A significant amount of research has been concerned with the effects of radio-frequency (rf) energy on organisms (electromagnetic energy between 1Kc and 100 Gc). Typically, this work has been concerned with determining damage resulting from body temperature increase. The average power densities used have been on the order of 0.1-1 w/cm² used over many minutes to several hours. In contrast, using average power densities measured in microwatts per square centimeter, we have found that other effects, which are transient, can be induced with this energy. Further, these effects occur the instant the transmitter is turned on. With appropriate modulation, the perception of various sounds can be induced in clinically deaf, as well as normal, human subjects at a distance of inches up to thousands of feet from the transmitter. With somewhat different transmitter parameters, we can induce the perception of severe buffeting of the head, without such apparent vestibular symptoms as dizziness or nausea. Changing transmitter parameters again, one can induce a "pins-and -needles" sensation.

Experimental work with these phenomena may yield information on auditory system functioning and, more generally, information on nervous system function. For example, this energy could possibly be used as a tool to explore nervous system coding, possibly using Neider and Neff's procedures (1), and for stimulating the nervous system without the damage caused by electrodes. Since most of our data have been obtained on the "rf sound" and only the visual system has previously been shown to respond to electromagnetic energy, this paper will be concerned only with the auditory effects data. As a further restriction, only data from human subjects will be reported, since only these data can be discussed meaningfully at the present time. The long series of studies we performed to ascertain that we were dealing with a biologically significant phenomenon (rather than broadcasts from sources such as loose fillings in teeth) are summarized in another paper (2), which also reports on the measuring instruments used in this work. The intent of this paper is to bring this new phenomenon to the attention of physiologists. The data reported are intended to suggest numerous lines of experimentation and indicate necessary experimental controls. Since we were dealing with a significant phenomenon, we decided to explore the effects of a wide range of transmitter parameters to build up a body of knowledge which would allow us to generate hypotheses and determine what experimental controls would be necessary. Thus, the numbers given are conservative; they should not be considered precise, since the transmitters were never located in ideal laboratory environments. Within the limits of our measurements, the orientation of the subject in the rf field was of little consequence. Most of the transmitters used to date in the experimentation have been pulse modulated with no information placed on the signal. The rf sound has been described as being a buzz, clicking, hiss, or knocking, depending on several transmitter parameters, i.e., pulse width and pulse-repetition rate (PRF). The apparent source of these sounds is localized by the subjects as being within, or immediately behind, the head. The sound always seem to come from within or immediately behind the head, no matter how the subject twists or

rotates in the rf field.

Our early experimentation, performed using transmitters with very short square pulses and high pulse repetition rates, seemed to indicate that we were dealing with harmonics of the PRF. However, our later work has indicated that this is not the case; rather, the rf sound appears to be the incidental modulation envelope on each pulse, as shown in Fig. 1

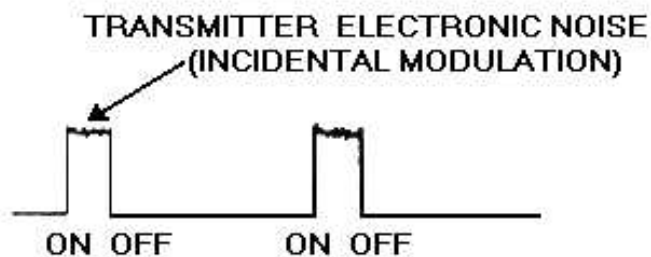
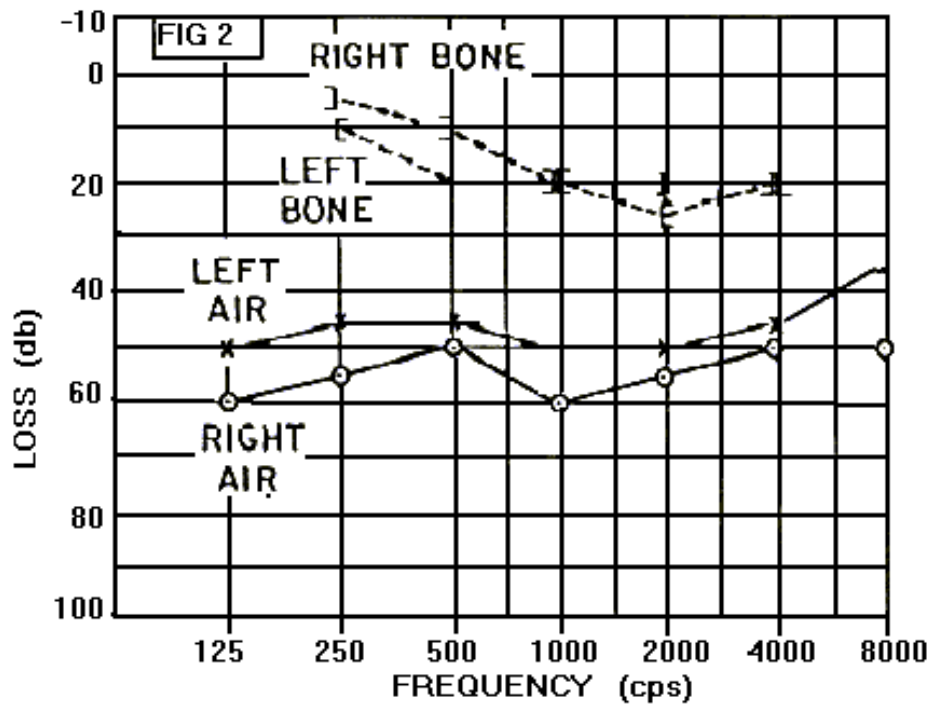


Fig 1 Oscilloscope representation of transmitter output over time (pulse-modulated)

Some difficulty was experienced when the subjects tried to match the rf sound to ordinary audio. They reported that it was not possible to satisfactorily match the rf sound to a sine wave or white noise. An audio amplifier was connected to a variable bandpass filter and pulsed by the transmitter pulsing mechanism. The subjects, when allowed to control the filter, reported a fairly satisfactory match. The subjects were fairly well satisfied when all frequencies below 5Kc audio were eliminated and the high-frequency audio was extended as much as possible. There was, however, always a demand for more high-frequency components. Since our tweeter has a rather good high frequency response, it is possible that we have shown an analogue of the visual phenomenon in which people see farther into the ultraviolet range when the lens is eliminated from the eye. In other words, this may be a demonstration that the mechanical transmission system of the ossicles cannot respond to as high a frequency as the rest of the auditory system. Since the rf bypasses the ossicle system and the audio given the subject for matching does not, this may explain the dissatisfaction of our subjects in their matching. At one time in our experimentation with deaf subjects, there seemed to be a clear relationship between the ability to hear audio above 5Kc and the ability to hear rf sounds. If a subject could hear above 5Kc, either by bone or air conduction, then he could hear the rf sounds. For example, the threshold of a subject whose audio-gram appears in Fig. 2 was the same average power density as our normal subjects. Recently, however, we have found people with a notch around 5Kc who do not perceive the rf sound generated by at least one of our transmitters.



Audiogram of deaf subject (otosclerosis) who had a "normal" rf sound threshold

THRESHOLDS

TABLE 1 Transmitter parameters

Trans- mitter Cycle	Frequency mc	Wave- length cm	Pulse Width usec	Pulses/Sec	Duty
A .0015	1,310	22.9	6	224	
B .0004	2,982	10.4	1	400	
C .0038	425	70.6	125	27	
D	425	70.6	250	27	.007
E	425	70.6	500	27	.014
F	425	70.6	1000	27	.028
G	425	70.6	2000	27	.056

As shown in Table 1, we have used a fairly wide range of transmitter parameters. We are currently experimenting with transmitters that radiate energy at frequencies below 425 mc, and are using different types of modulation, e.g., pulse-repetition rates as low as 3 and 4/sec. In the experimentation reported in this section, the ordinary noise level was 70-90 db (measured with a General Radio Co. Model 1551-B sound-level meter). In order to minimize the rf energy used in the experimentation, subjects wore Flent antinoise ear stoppers whenever measurements were made. The Ordinary noise attenuation of the Flents is indicated in Fig. 3. Although the rf sounds can be heard without the use of Flents, even above an ambient noise level of 90 db, it appears that the ambient noise to some extent "masked" the rf sound.

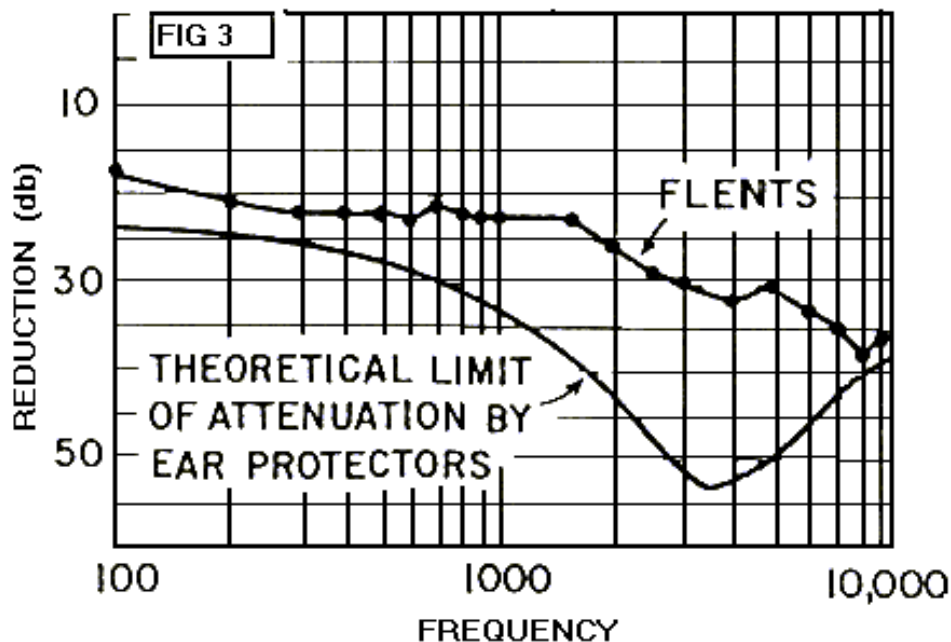


FIG 3 Attenuation of ambient sound with Flent antinoise ear stopples (collated from Zwislocki (3) and Von Gierke (4))

TABLE 2 Threshold for perception of rf sound (ambient noise level 70 - 90 db)

			Avg	Peak	Peak	Peak
Magnetic						
			Power	Power	Electric	Field
Trans-	Frequency	Duty	Density	Density	Field	amp
mitter	mc	Cycle	mw/cm ²	mw/cm ²	v/cm	
turns/m						
A	1,310	.0015	0.4	267	14	4

B	2,982	.0004	2.1	5,250	63	17
C	425	.0038	1.0	263	15	4
D	425	.007	1.9	271	14	4
E	425	.014	3.2	229	13	3
F	425	.028	7.1	254	14	4

Table 2 gives the threshold for perception of the rf sounds. It shows fairly clearly that the critical factor in perception of rf sound is the peak power density, rather than the average power density. The relatively high value for transmitter B was expected and will be discussed below. Transmitter G has been omitted from this table since the 20 mw/cm² reading for it can be considered only approximate. The field-strength-measuring instruments used in that experiment did not read high enough to give an accurate reading. The energy from transmitter H was not perceived, even when the peak power density was as high as 25 w/cm². When the threshold energy is plotted as a function of the rf energy (Fig 4), a curve is obtained which is suggestive of the curve of penetration of rf energy into the head. Figure 5 shows the calculated penetration, by frequency of rf energy, into the head. Our data indicate that the calculated penetration curve may well be accurate at the higher frequencies but the penetration at the lower frequencies may be greater than that calculated on this model.

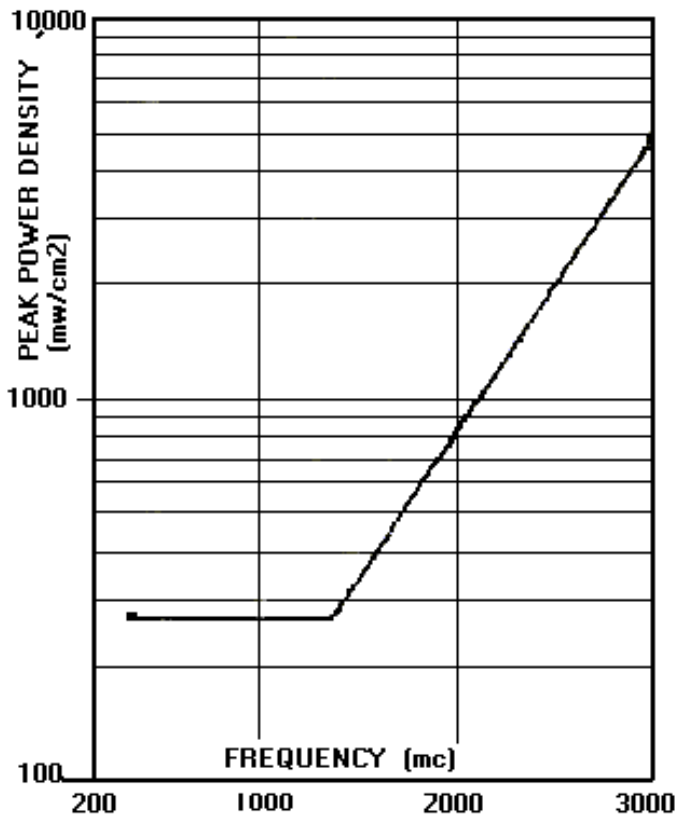


Fig 4 Threshold energy as a function of frequency of electromagnetic energy (ambient noise level 70 - 90 db)

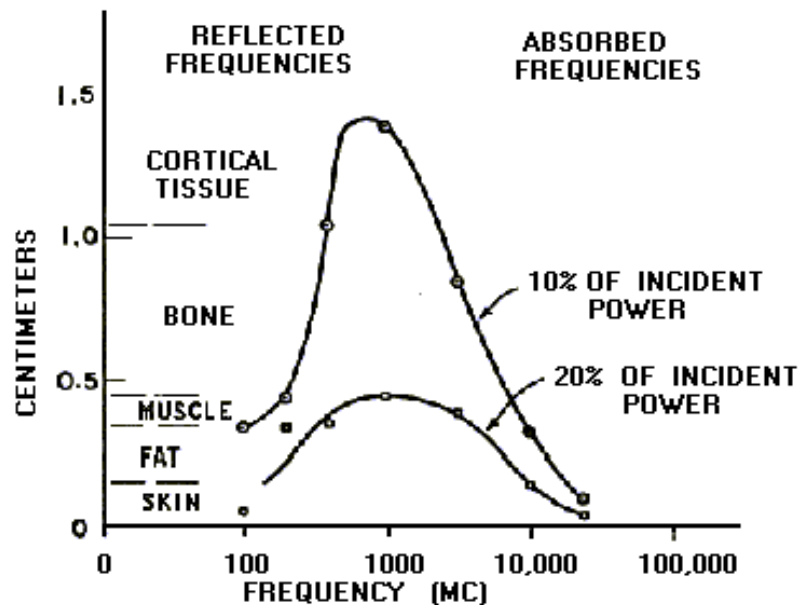


FIG 5 Microwave power distribution in the forehead model neglecting resonance effects and considering only first reflections (from Nieset et al [5], modified)

As previously noted, the thresholds were obtained in a high ambient noise environment. This is an unusual situation as compared to obtaining thresholds of regular audio sound. Our recent experimentation leads us to believe that, if the ambient noise level were not so high, these threshold field strengths would be much lower. Since one purpose of this paper is to suggest experiments, it might be appropriate to theorize as to what the rf sound threshold might be if we assume that the subject is in an anechoic chamber.

It is also assumed that there is no transducer noise.

Given: As a threshold for the rf sound, a peak power density of 275 mw/cm² determined in an ambient noise environment of 80 db. Earplugs attenuate the ambient noise to 30 db.

If: 1 mw/cm² is set equal to 0 db, then 275 mw/cm² is equal to 24 db.

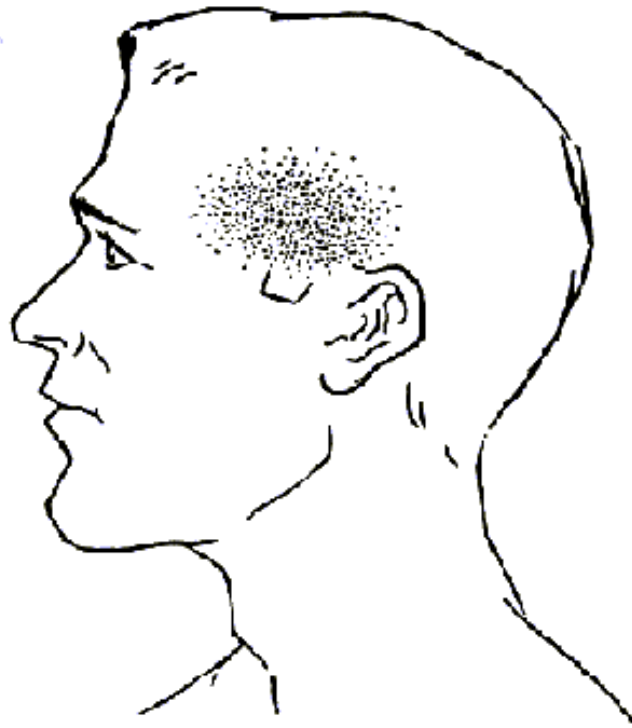
Then: We can reduce the rf energy 50 db to -26 db as we reduce the noise level energy from 50 db to 0 db. We find that -26 db rf energy is approximately 3 uw/cm².

Thus: In an anechoic room, rf sound could theoretically be induced by a peak power density of 3 uw/cm² measured in free space. Since only 10% of this energy is likely to penetrate the skull, the human auditory system and a table radio may be one order of magnitude apart in sensitivity to rf energy.

RF DETECTOR IN AUDITORY SYSTEM

One possibility that seems to have been ruled out in our experimentation is that of a capacitor type effect with the tympanic membrane and oval window acting as plates of a capacitor. It would seem possible that these membranes, acting as plates of a capacitor, could be set in motion by rf energy. There are, however, three points of evidence against this possibility. First, when one rotates a capacitor in an rf field, a rather marked change occurs in the capacitor as a function of its orientation in the field. When our subjects rotate or change positions of their heads in the field, the loudness of the rf sound does not change appreciably. Second, the distance between these membranes is rather small, compared with the wavelengths used. As a third point, we found that one of our subjects who has otosclerosis heard the rf sound.

Another possible location for the detecting mechanism is in the cochlea. We have explored this possibility with nerve-deaf people, but the results are inconclusive due to factors such as tinnitus. We are currently exploring this possibility with animal preparations. The third likely place for the detection mechanism is the brain. Burr and Mauro (6) presented evidence that indicates that there is an electrostatic field about neurons. Morrow and Sepiel (7) presented evidence that indicates the existence of a magnetic field about neurons. Becker (personal communication) has done some work indicating that there is longitudinal flow of charge carriers in neurons. Thus, it is reasonable to suspect that possibly the electromagnetic field could interact with neuron fields. As yet, evidence of this possibility is inconclusive. The strongest point against is that we have not found visual effects although we have searched for them. On the other hand, we have obtained other nonauditory effects and found that the sensitive area for detecting rf sounds is a region over the temporal lobe of the brain. One can shield, with a 2-in.sq. piece of fly screen, a portion of the stripped area shown in Fig. 6 and completely cut off the rf sound.



**FIG 6 Area most sensitive to electromagnetic energy
(shaded portion)**

Another possibility should also be considered. There is no good reason to assume that there is only one detector site. On the contrary, the work of Jones et al (8), in which they placed electrodes in the ear and electrically stimulated the subject, is sufficiently relevant to suggest the possibility of more than one detector site. Also, several sensations have been elicited with properly modulated electromagnetic energy. It is doubtful that all of these can be attributed to one detector. As mentioned earlier, the purpose of this paper is to focus the attention of physiologists on an unusual area and stimulate additional work on which interpretations can be based. Interpretations have been deliberately omitted from this paper since additional data are needed before a clear picture can emerge. It is hoped that the additional exploration will also result in an increase in our knowledge of nervous system functions.

REFERENCES:

1. Neider, P.C., and W.D.Neff. *Science* 133: 1010,1961.
2. Frey, A.H. *Aero Space Med.* 32: 1140, 1961.
3. Zwislocki, J. *Noise Control* 4: 42, 1958.
4. Von Gierke, H. *Noise Control* 2: 37, 1956.
5. Niest, R., L Pinneo, R. Baus, J. Fleming, and R. McAfee. *Ann. Rept. USA Rome Air Development Command,TR-61-65, 1961*
6. Burr, H., and A. Mauro. *Yale J Biol.and Med.* 21:455, 1949.
7. Morrow, R., and J. Seipel. *J. Wash. Acad. SCI.* 50: 1, 1960.
8. Jones, R.C.,S.S. Stevens, and M.H. Lurie. *J.Acoustic.Soc. Am.* 12: 281, 1940.

[a second paper by Alan Frey](#)

[Hearing in Electromagnetic Fields \(extract\) by Clyde E Ingalls](#)

[HOME PAGE](#)